

Arsenal 2-0 Wolverhampton Wanderers

English Premier League 2024/2025

Match Report

Summary

Starting 11

2	W. Saliba			
4	B. White			
5	T. Partey			
6	Gabriel Magalhaes			
7	B. Saka	⚽	🟡	▼ 80
8	M. Ødegaard			
11	Gabriel Martinelli			
17	O. Zinchenko			▼ 69
22	David Raya			
29	K. Havertz	⚽		
41	D. Rice			▼ 85

Substitutes

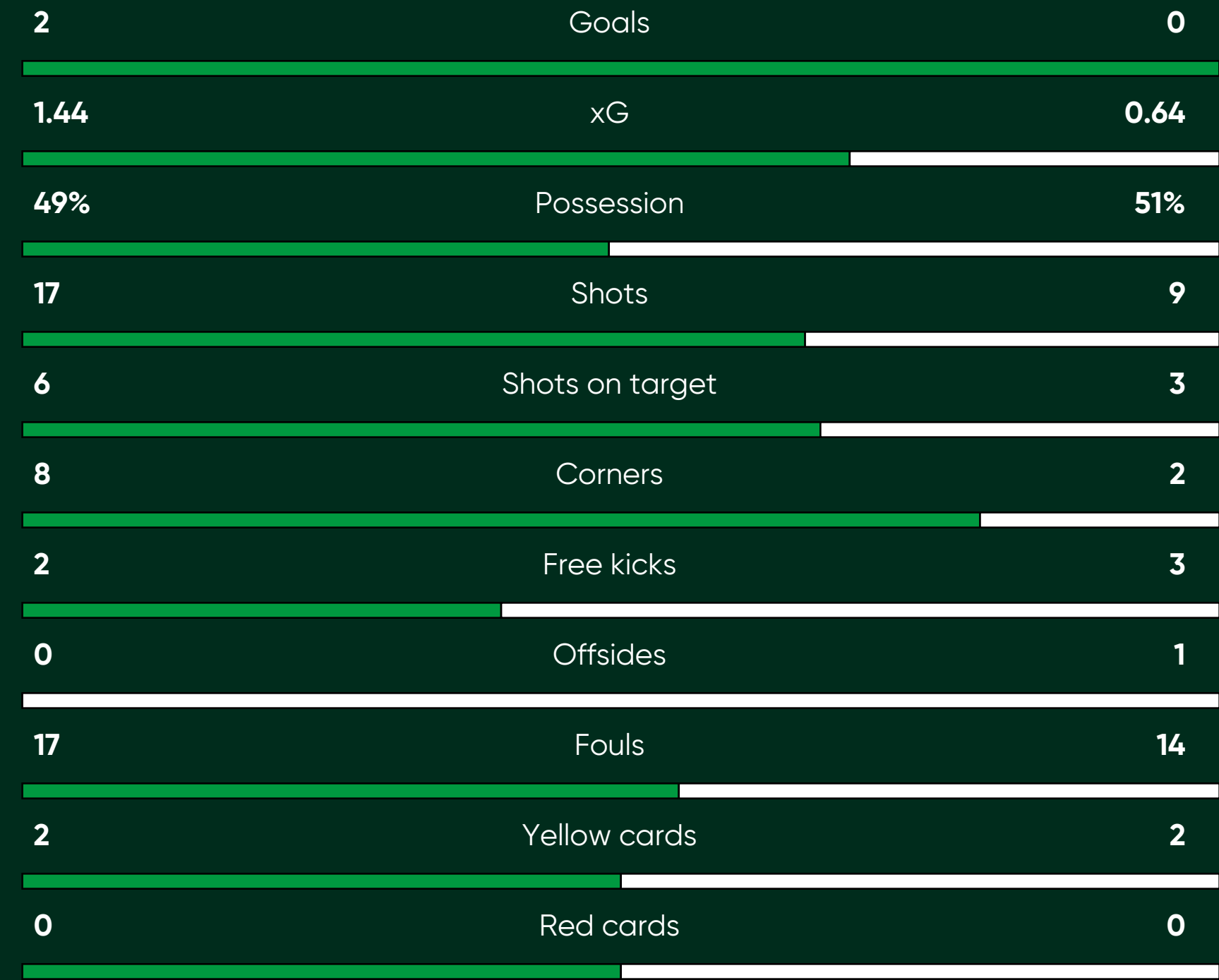
9	Gabriel Jesus		🟡	▲ 85
12	J. Timber			▲ 69
19	L. Trossard			▲ 80

Starting 11

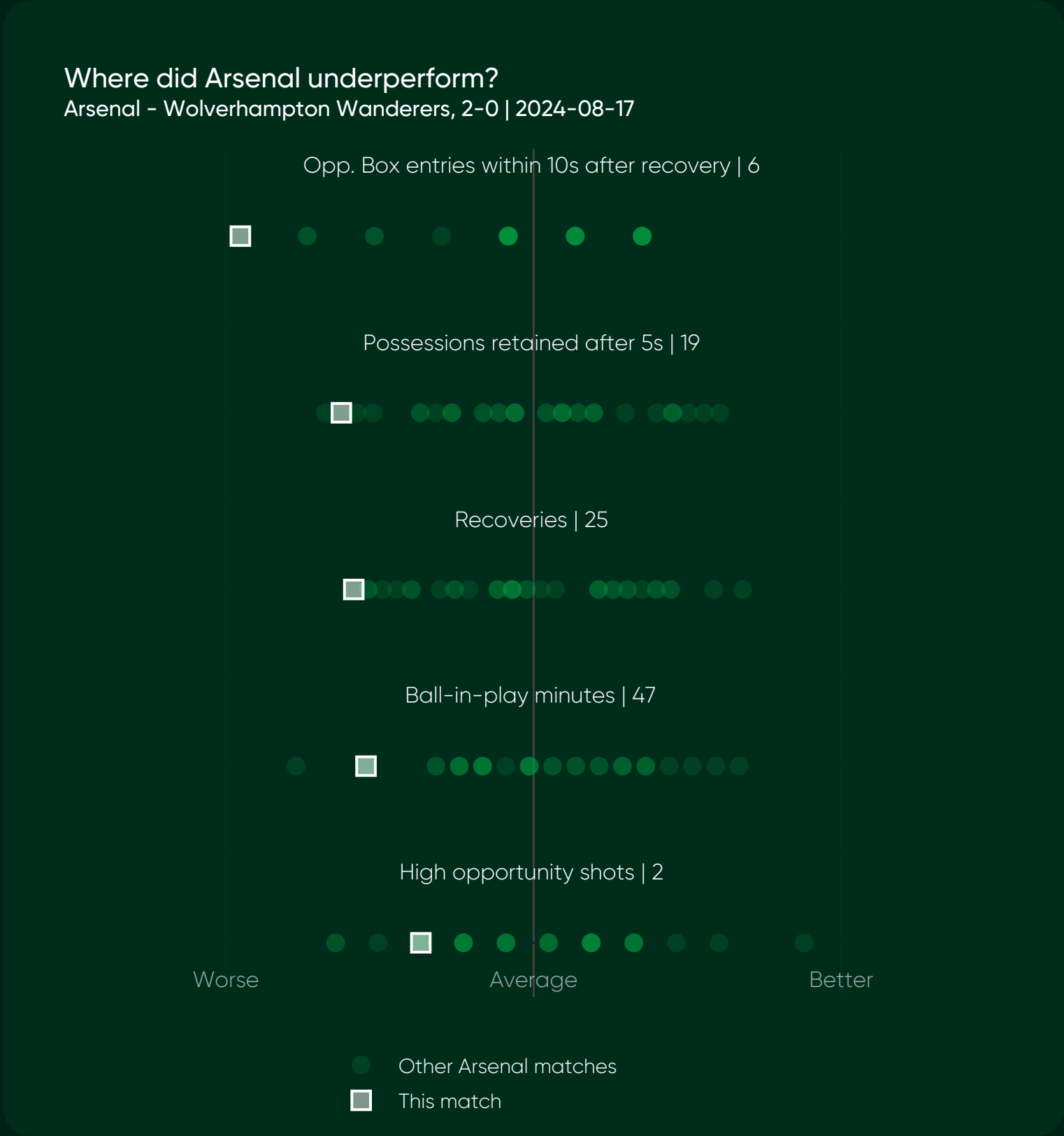
1	José Sá			
2	M. Doherty			
3	R. Ait-Nouri			▼ 84
5	M. Lemina			
8	João Gomes		🟡	▼ 84
9	J. Strand Larsen			▼ 84
11	Hwang Hee-Chan			
14	Y. Mosquera			
19	Rodrigo Gomes			▼ 75
24	Toti		🟡	
27	J. Bellegarde			▼ 57

Substitutes

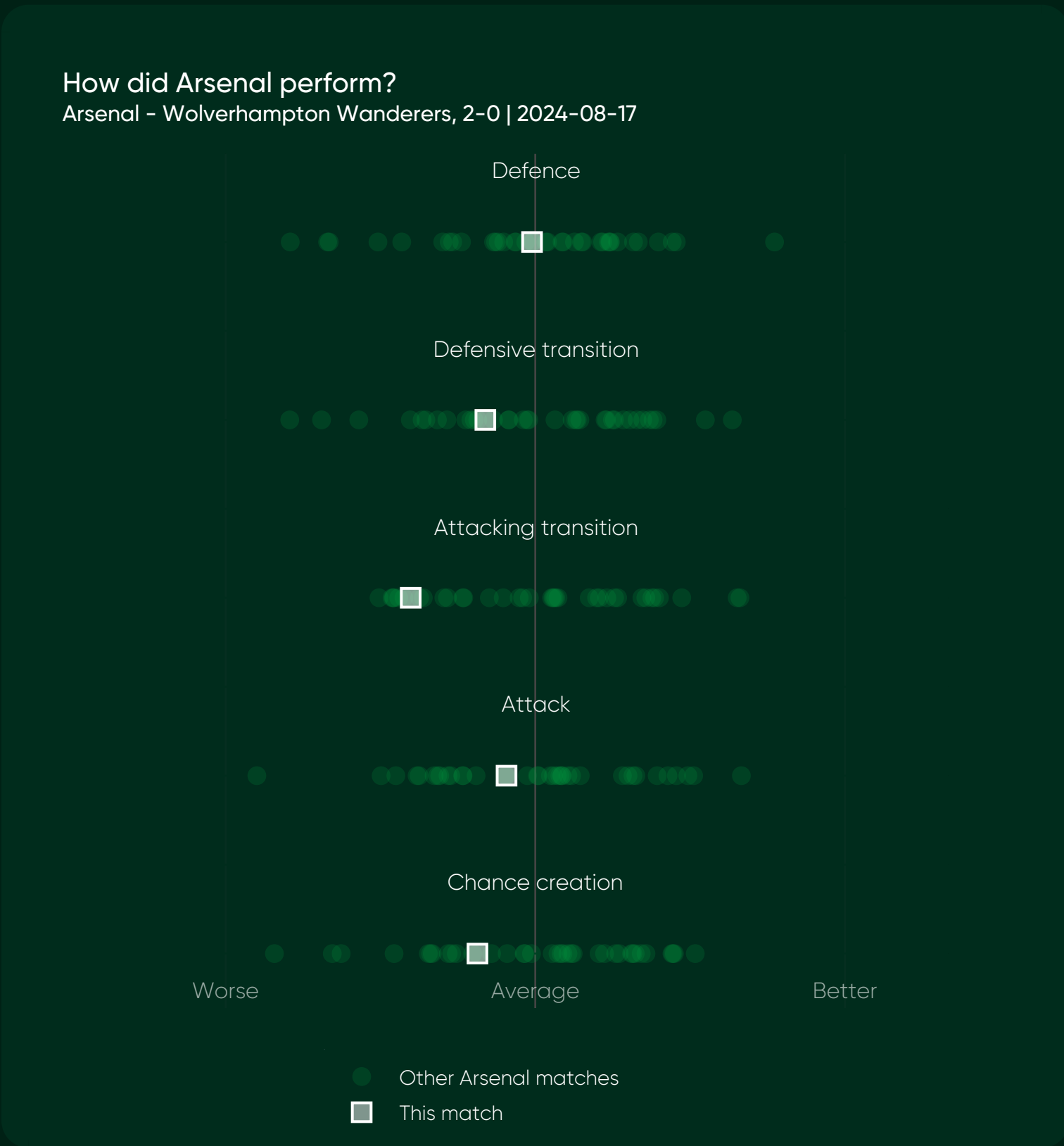
10	Daniel Podence			▲ 75
12	Matheus Cunha			▲ 57
15	C. Dawson			▲ 84
21	Pablo Sarabia			▲ 84
23	Chiquinho			▲ 84



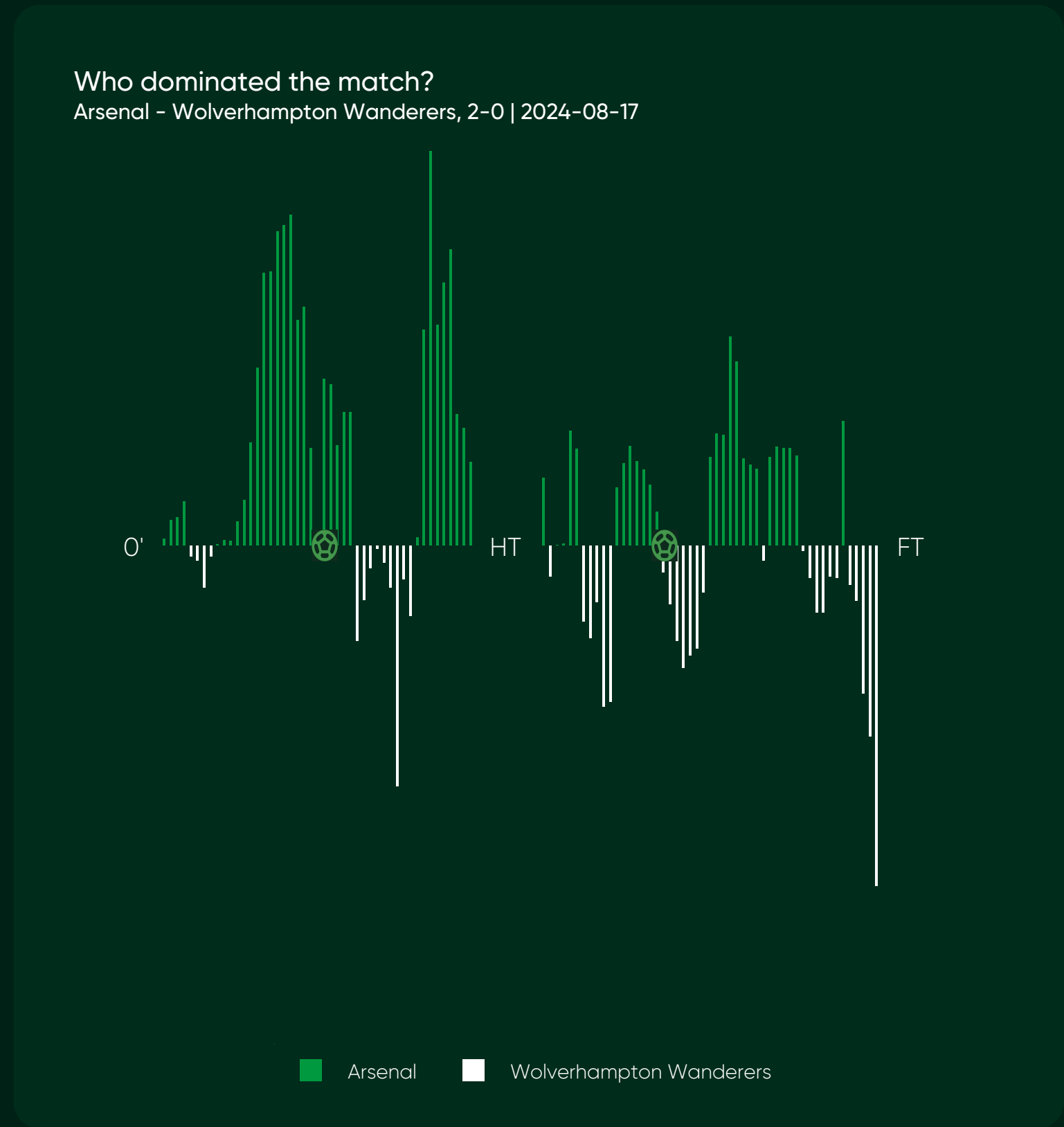
What stood out in the match?



"Arsenal's Chance Creation Efficient, Struggled with Transitions"



In their 2-0 victory over Wolverhampton Wanderers, Arsenal's performance was mostly typical of their usual play. Their chance creation was on par with their averages this season, despite making fewer high opportunity shots. Their attacking play was standard, maintaining the usual proportion of final third entries that arrived into the penalty box. However, Arsenal struggled with attacking transitions, retaining very few possessions after five seconds.

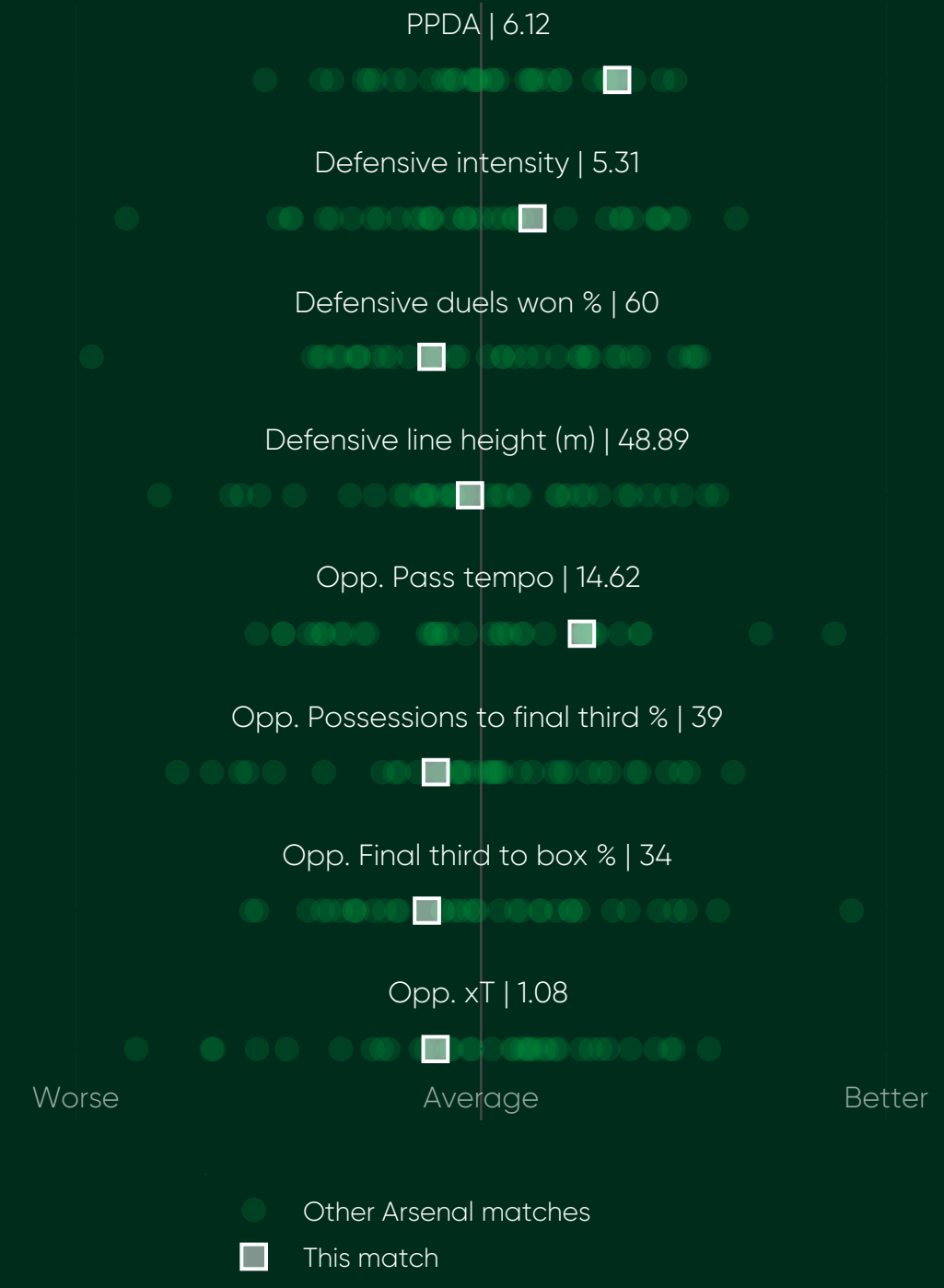


Arsenal can be reasonably satisfied with their performance, managing to secure a clean sheet and score two goals. They dominated the first half, but the second half was more balanced, with neither team controlling the game. Wolverhampton Wanderers showed some resistance in extra time, but it was not enough to alter the outcome.

Arsenal's Strong and Disciplined Defensive Display

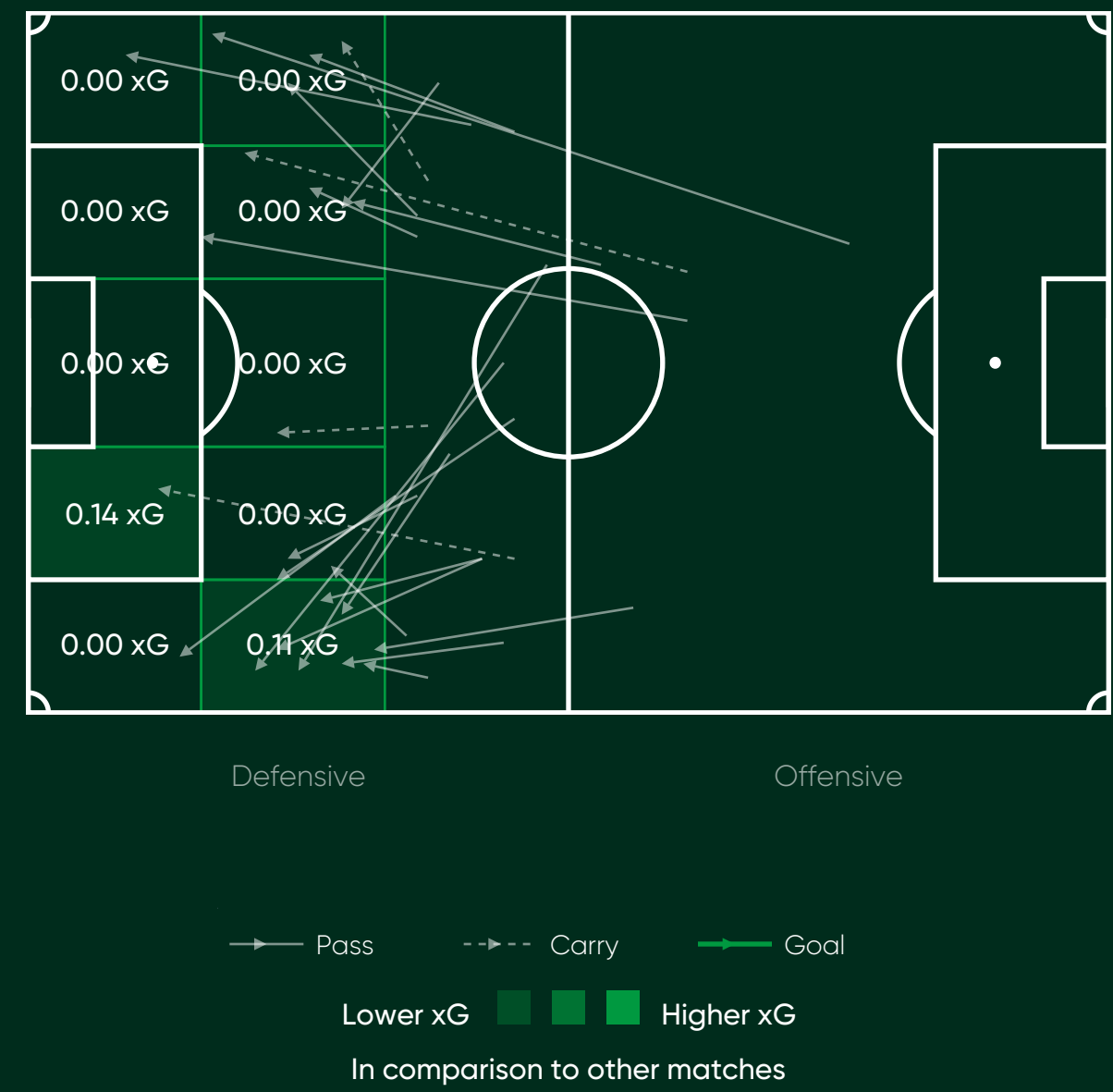
How did Arsenal perform in defence?

Arsenal - Wolverhampton Wanderers, 2-0 | 2024-08-17



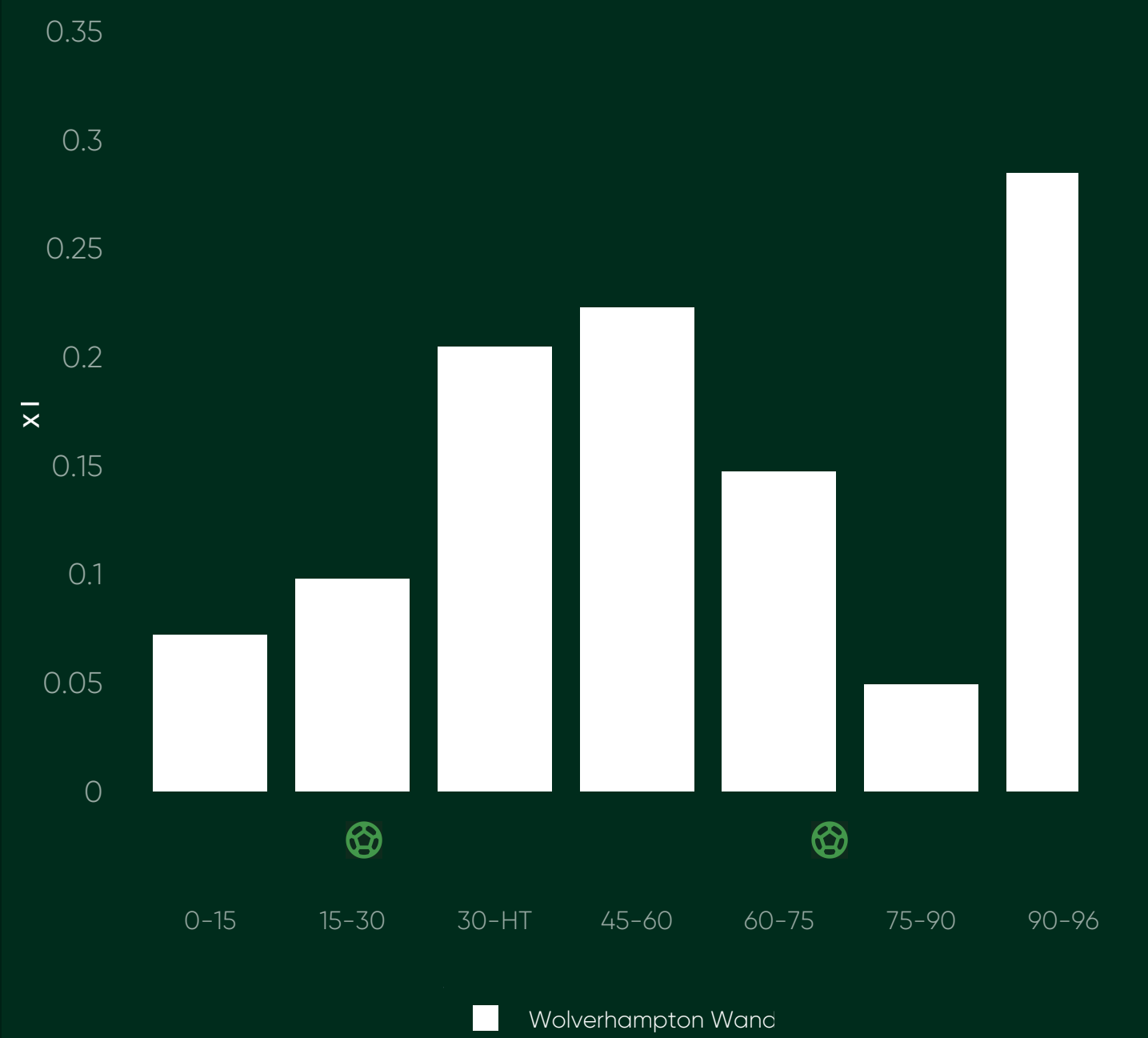
How did Wolverhampton Wanderers get into the final third?

Arsenal - Wolverhampton Wanderers, 2-0 | 2024-08-17



How dangerous were Wolverhampton Wanderers throughout the match?

Arsenal - Wolverhampton Wanderers, 2-0 | 2024-08-17



Arsenal maintained their typical defensive performance in their win against Wolverhampton Wanderers. They controlled the tempo and intensity in their defensive actions, engaging the opposition at their usual defensive line height and matched their usual proportion of won duels. While Wolverhampton managed a typical expected threat and entry into dangerous areas, Arsenal's efficient and resilient defending ensured that these threats were effectively countered.

Arsenal's defensive performance against Wolverhampton Wanderers was strong and disciplined, as they successfully protected most areas of their defensive third. However, Wolves managed to create some dangerous opportunities when entering the final third on the right side of the box.

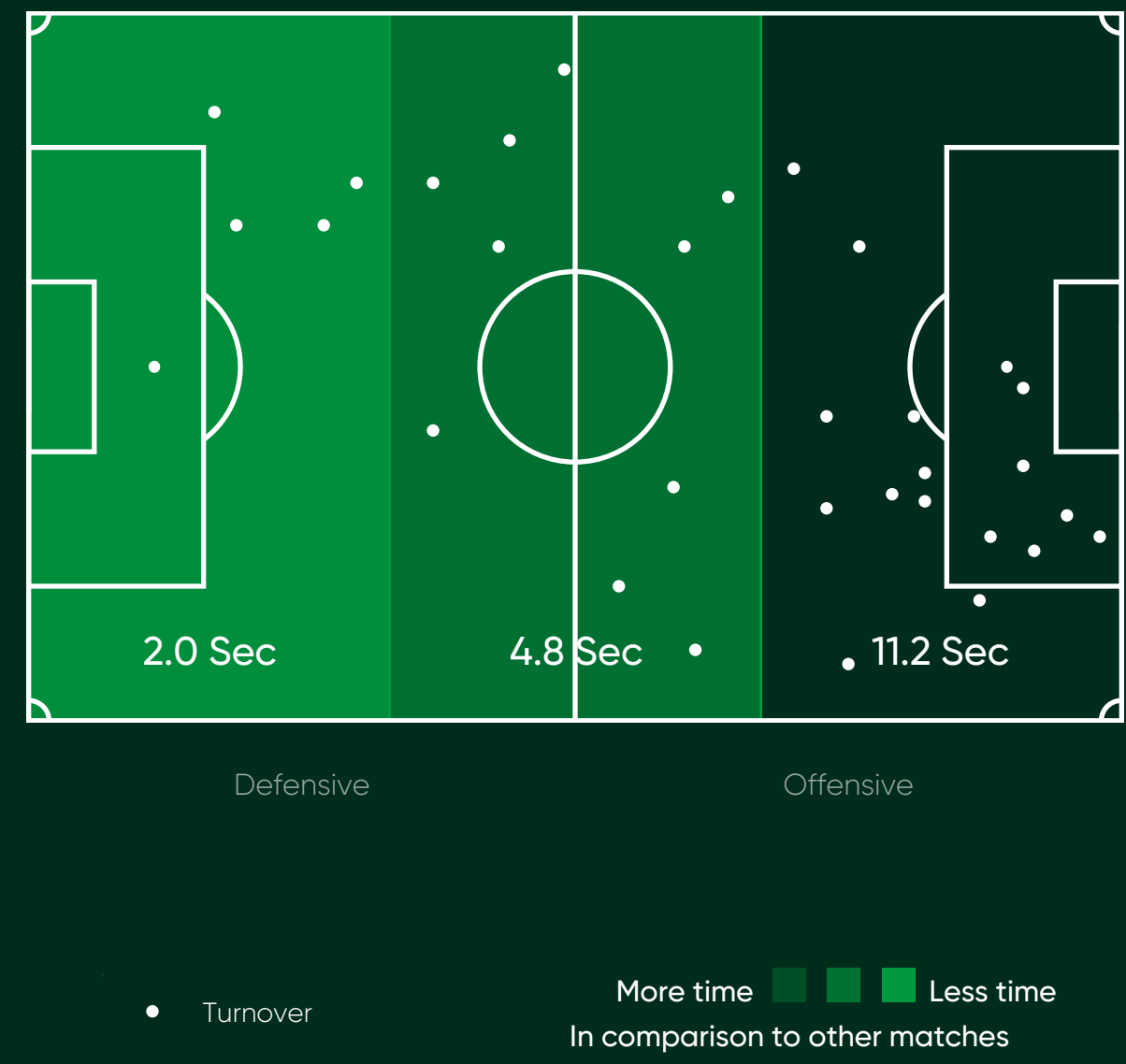
Arsenal maintained solid defensive performance throughout the match against Wolverhampton Wanderers, conceding almost no expected threat during most periods. Their only vulnerable moments came towards the end of both halves and during additional time, but they still managed to keep a clean sheet.

Arsenal's Efficient Defensive Transitions Ensure Clean Sheet

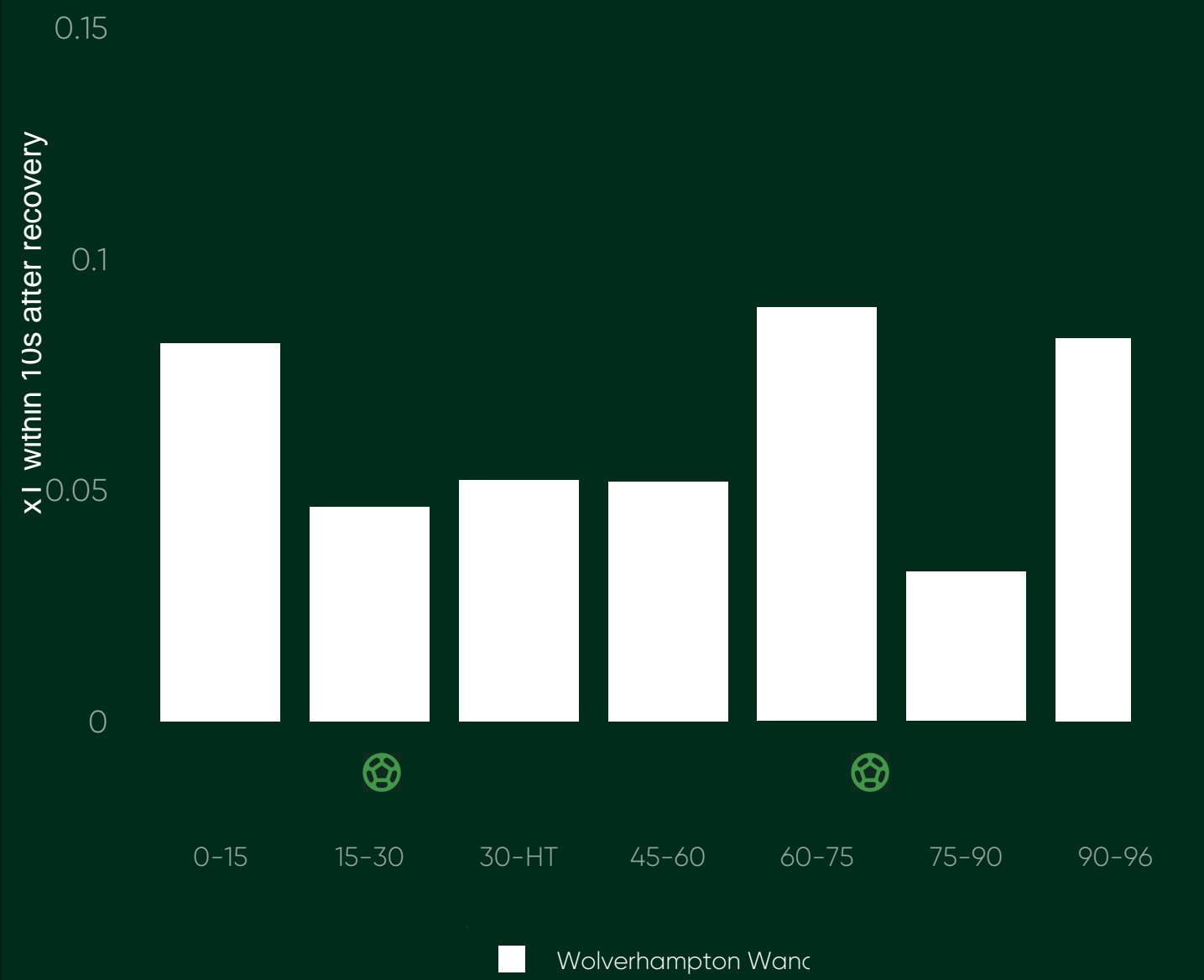
How did Arsenal perform in defensive transition?
Arsenal - Wolverhampton Wanderers, 2-0 | 2024-08-17



How quick were Arsenal to first defensive action?
Arsenal - Wolverhampton Wanderers, 2-0 | 2024-08-17



How dangerous were Wolverhampton Wanderers after winning the ball?
Arsenal - Wolverhampton Wanderers, 2-0 | 2024-08-17



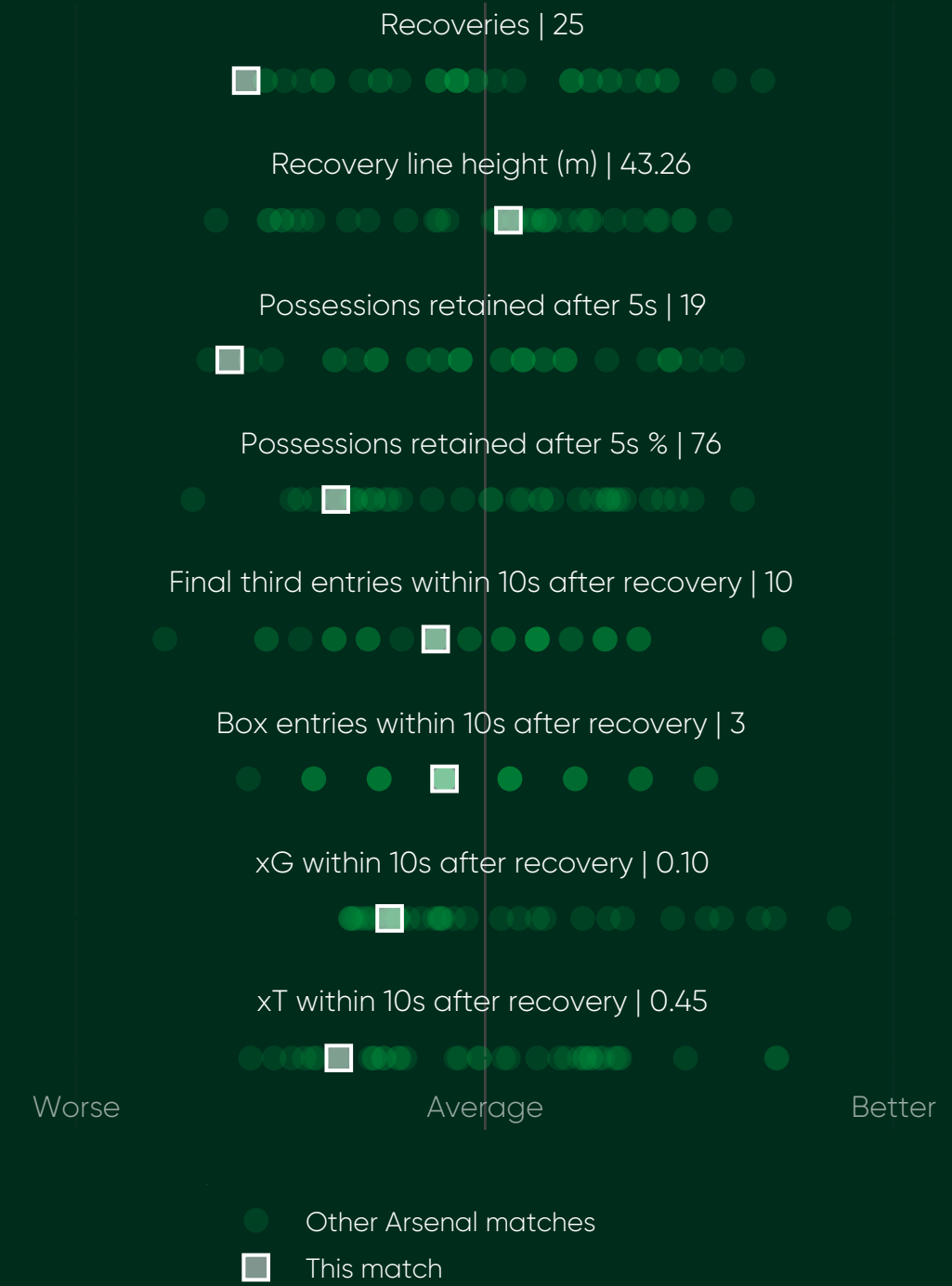
Arsenal dealt with defensive transitions typically against Wolverhampton Wanderers. They kept possession better and lost the ball fewer times ensuring the opposition did not have many opportunities to attack in transition. Even if they did recover the ball in the final third frequently, they still couldn't get into dangerous positions very often. Arsenal took their usual time to engage and make recoveries and their defensive discipline and organisation ensured a clean sheet and victory.

Arsenal had an impressive defensive approach in their 2-0 win against Wolverhampton Wanderers. They were quick to engage and made lots of defensive actions both in their own third and the middle third. In the final third, they maintained a steady response time, displaying an overall effective defensive transition performance.

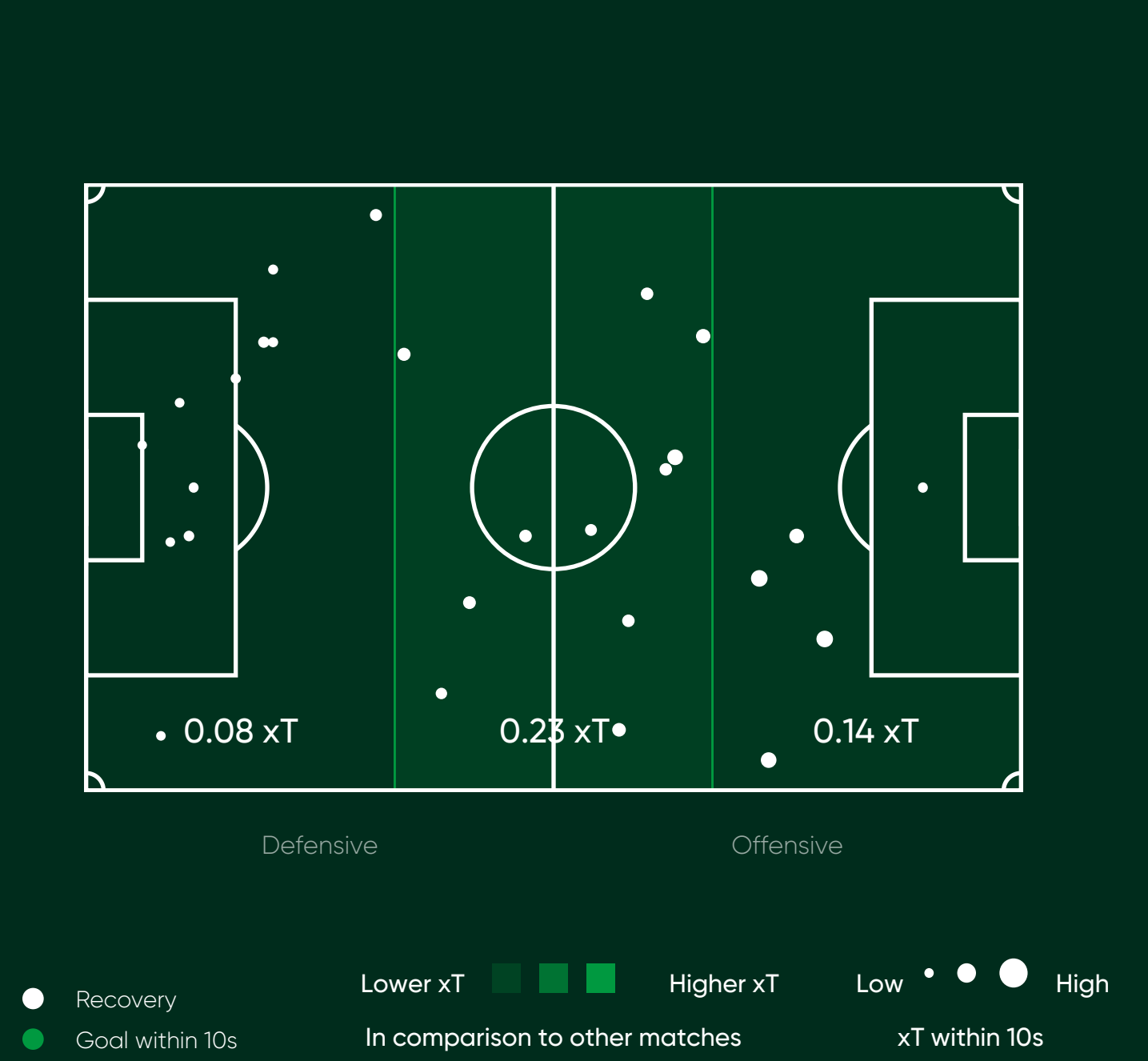
Arsenal's handling of defensive transitions matched their usual standards, dealing efficiently with threats. Throughout the match, they allowed very little danger and it was their consistency in this area that helped them keep a clean sheet.

Arsenal's Attacking Transitions Below Usual Standard

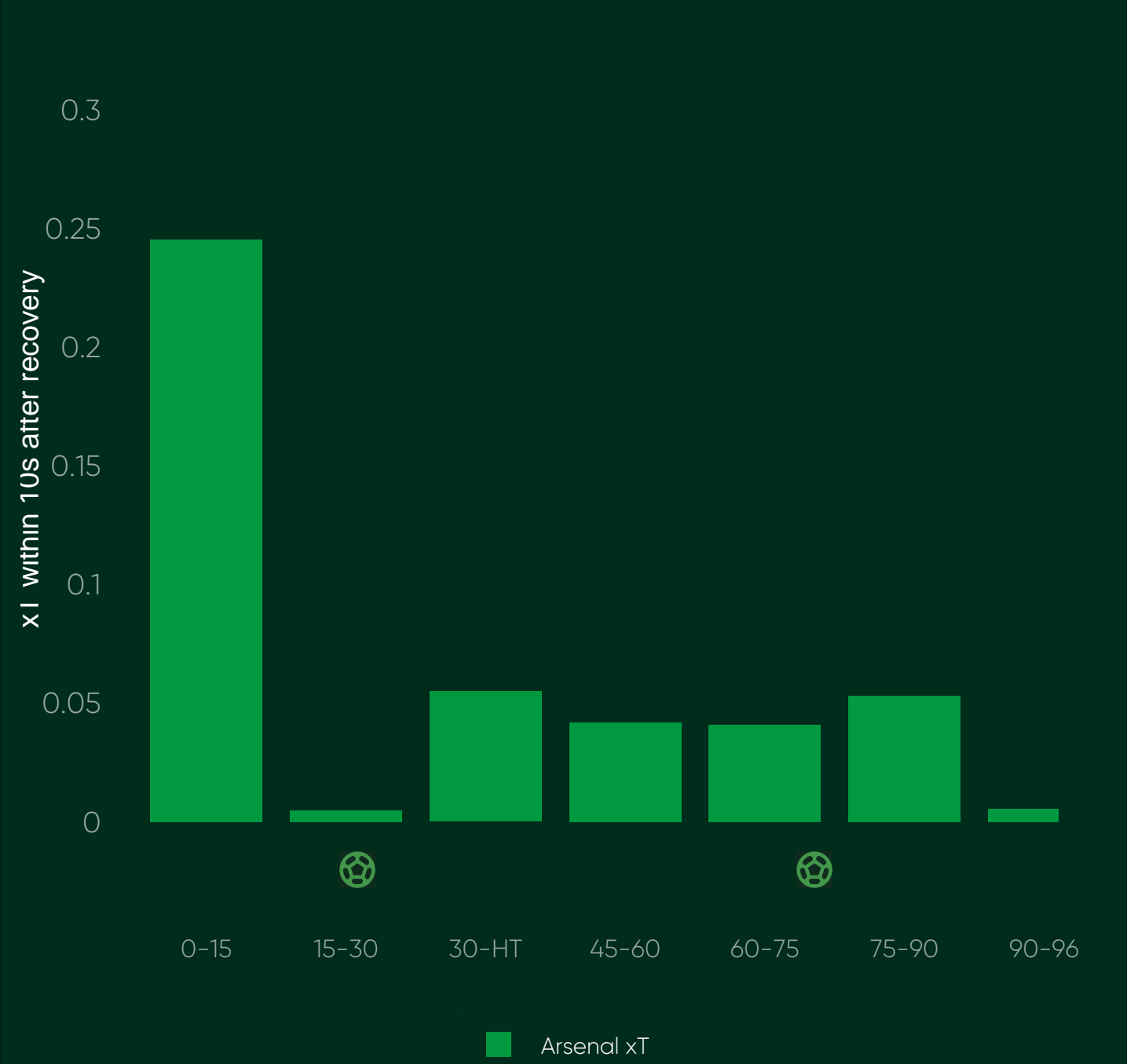
How did Arsenal perform in attacking transition?
Arsenal - Wolverhampton Wanderers, 2-0 | 2024-08-17



Where did Arsenal recover the ball?
Arsenal - Wolverhampton Wanderers, 2-0 | 2024-08-17



How dangerous were Arsenal after winning the ball?
Arsenal - Wolverhampton Wanderers, 2-0 | 2024-08-17



In their match against Wolverhampton Wanderers, Arsenal's performance in attacking transitions was below their usual standard. They struggled to recover the ball frequently, and when they did, they had difficulty retaining possession beyond five seconds. Despite creating a typical number of box and final third entries after recoveries, their overall threat from these transitions was lower than usual.

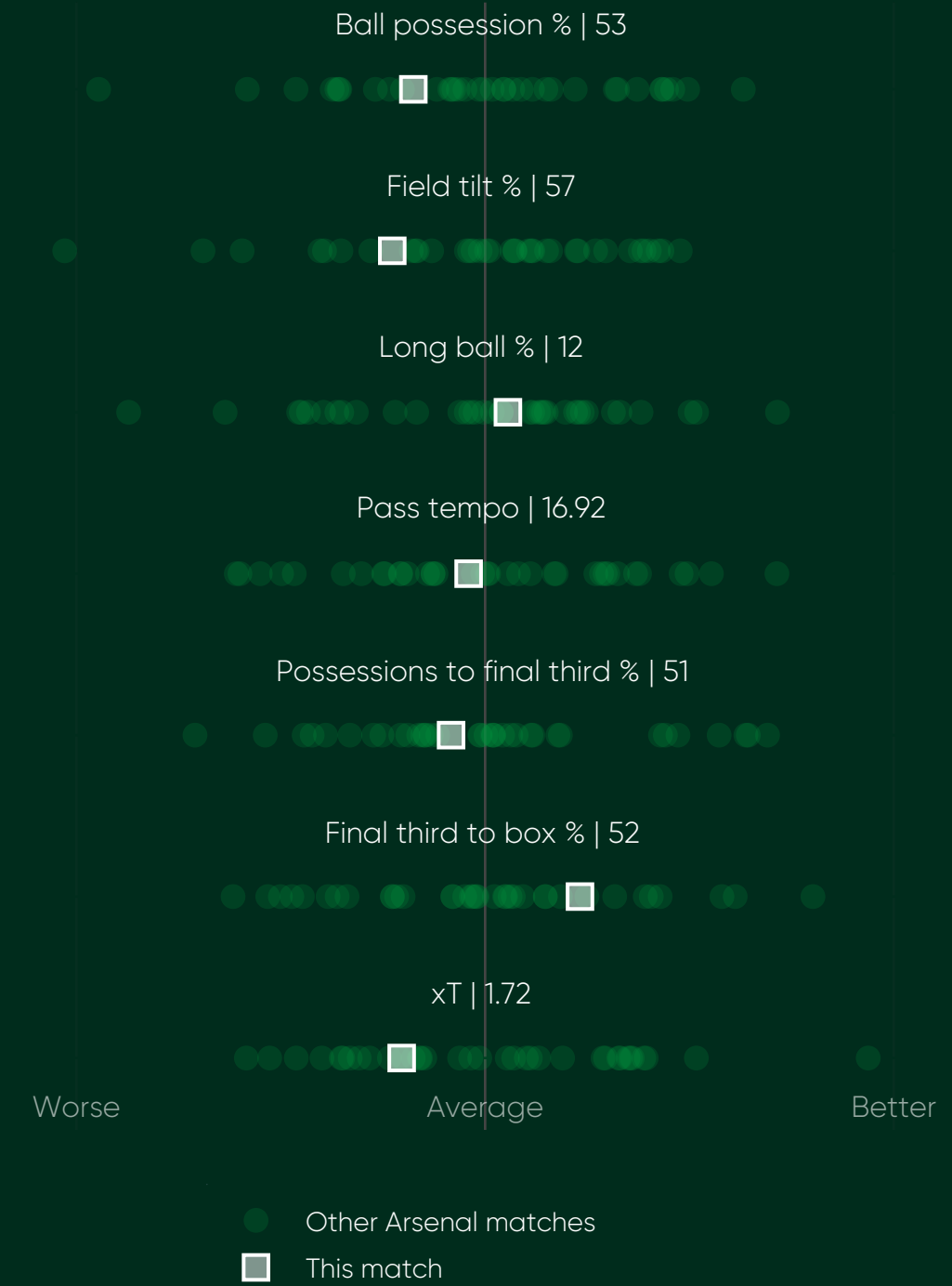
In this match, Arsenal did not find a lot of scoring opportunities through quick transitions, especially from their own defensive third where they created minimal danger. They achieved their usual level of expected threat from the middle and final thirds, showing steady, if unspectacular, counterattacking efficiency.

Arsenal's performance in attacking transitions lagged behind their usual standards in this match, despite scoring twice and keeping a clean sheet. They started strong in creating expected threat within the first 15 minutes of the first half but then saw a significant drop-off in transition threat for the rest of the game.

Arsenal's Attacking Approach Steady Yet Declining

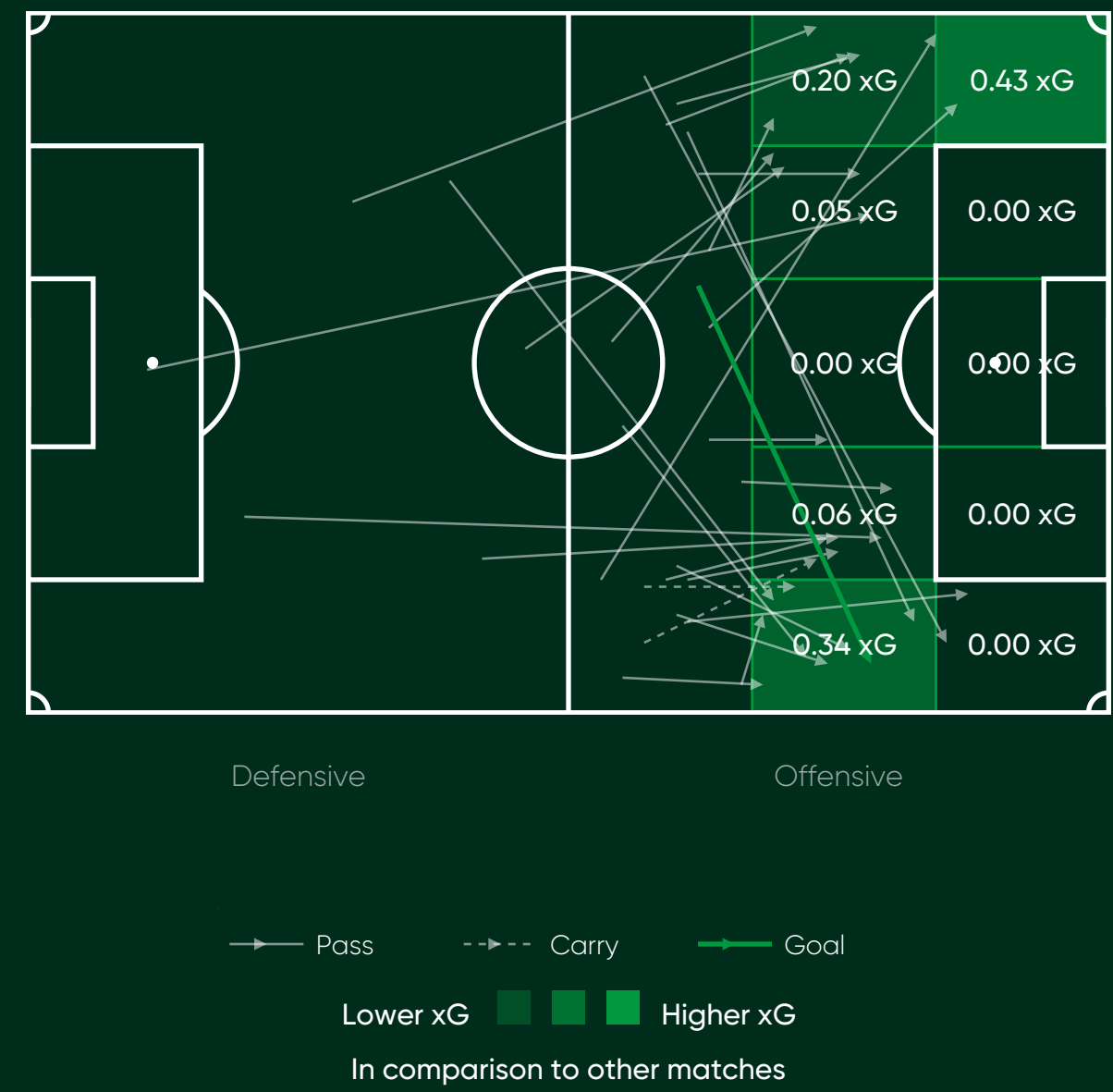
How did Arsenal perform in attack?

Arsenal - Wolverhampton Wanderers, 2-0 | 2024-08-17



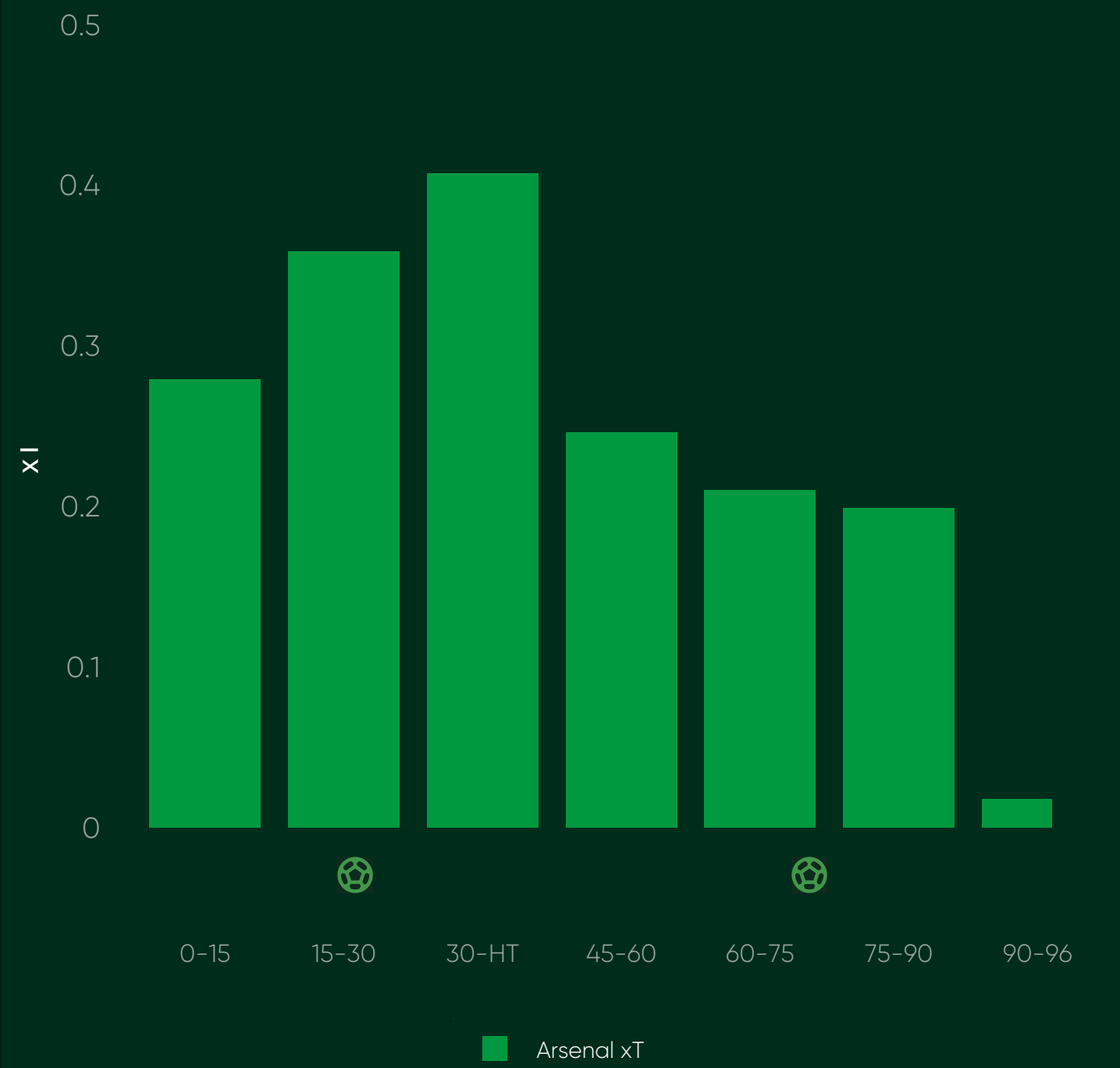
How did Arsenal get into the final third?

Arsenal - Wolverhampton Wanderers, 2-0 | 2024-08-17



How dangerous were Arsenal throughout the match?

Arsenal - Wolverhampton Wanderers, 2-0 | 2024-08-17



Arsenal's performance against Wolverhampton Wanderers was solid but typical of their season's standards. They maintained their usual ball possession, pass tempo, and proportion of long balls. Their ability to progress into the final third and convert those entries into penalty box opportunities remained consistent, as did their expected threat. This match confirmed Arsenal's attacking approach as steady yet effective, achieving a straightforward win without deviating from their standard offensive strategies.

In this match, Arsenal were particularly effective while attacking from the left corner area and right wing, generating a high number of expected goals from these zones. Their typical attacking approach contributed effectively to their 2-0 victory over Wolverhampton Wanderers.

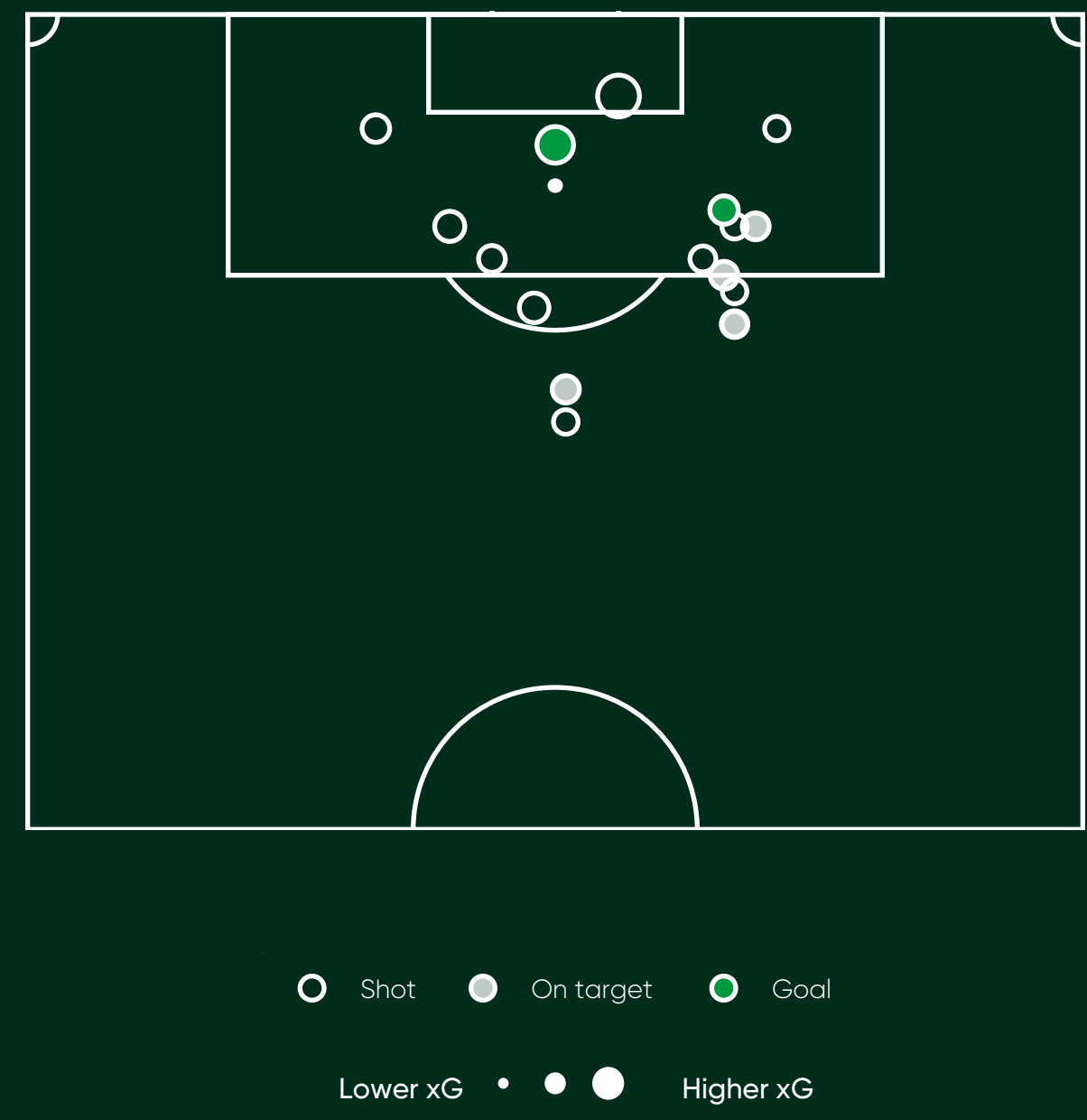
In a performance typical for them, Arsenal maintained consistent attacking pressure throughout most of the match. They scored one goal in each half but were less threatening toward the end of the game, with their attacking output declining in the last 15 minutes of normal time and into additional time.

"Arsenal Effective in Penalty Area Action"

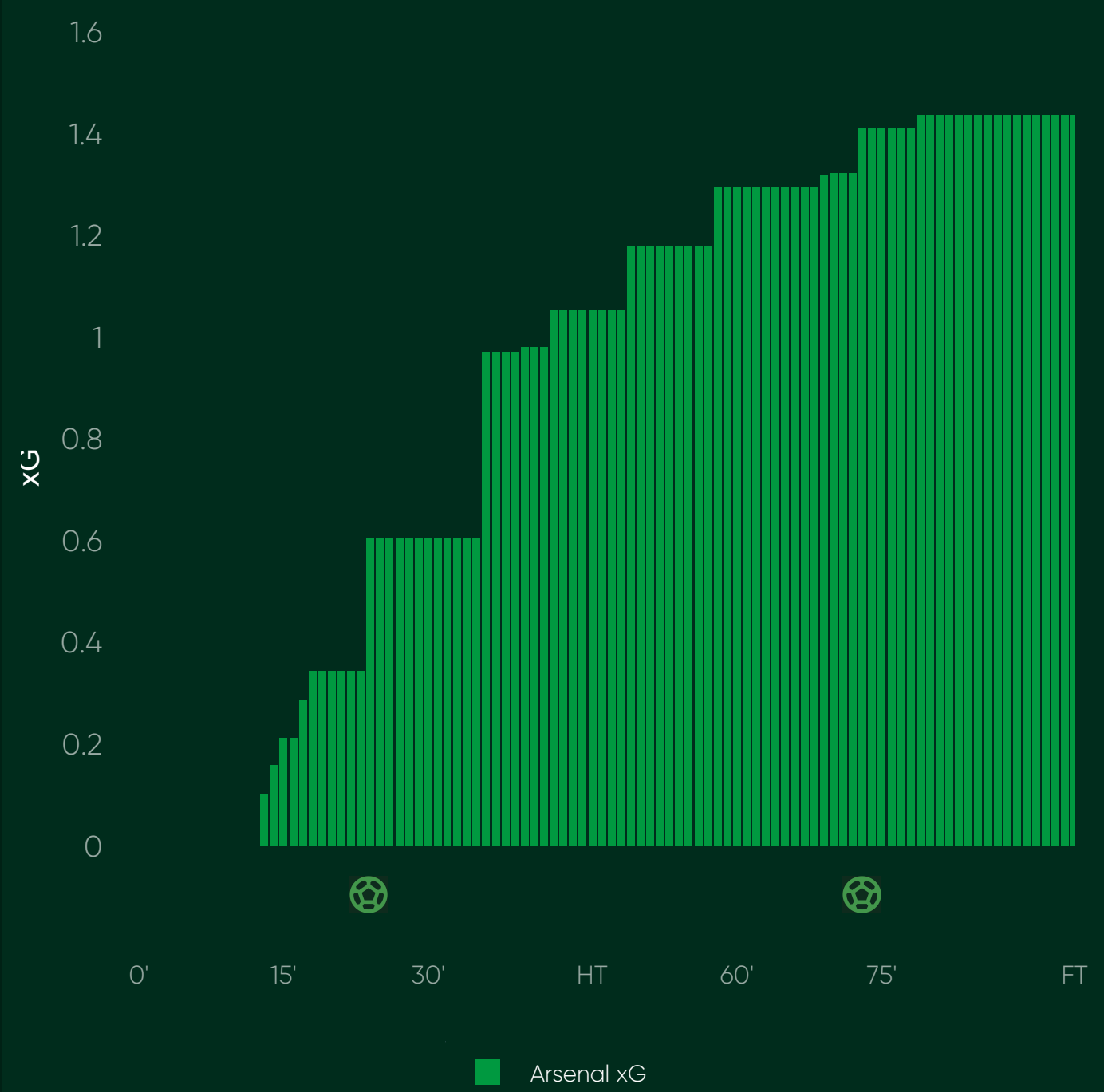
How did Arsenal perform in chance creation?
Arsenal - Wolverhampton Wanderers, 2-0 | 2024-08-17



How dangerous were Arsenal's shots?
Arsenal - Wolverhampton Wanderers, 2-0 | 2024-08-17



When did Arsenal create chances?
Arsenal - Wolverhampton Wanderers, 2-0 | 2024-08-17



Arsenal's performance against Wolverhampton Wanderers was average in terms of chance creation. They had a good amount of penalty area action and box entries that led to shots, which is consistent with their usual behaviour. Despite creating fewer high-quality opportunities, they managed to secure a win. The number of goals scored without penalty was typical, showing that they were effective in making the most out of their chances.

Against Wolverhampton Wanderers, Arsenal were most dangerous when taking shots from the right side of the box and from outside the box. They created a typical number of chances from the central areas, including the golden zone and the six-yard box, but managed a solid performance resulting in a win.

Arsenal had a typical performance in terms of chance creation, capitalizing on a decent opportunity in the 25th minute to score their first goal. They missed several chances throughout the match but managed to score another goal from an average opportunity in the 74th minute.

Glossary

Ball possession %	The share of possession of a team.
Ball-in-play minutes	The number of minutes that the ball was in play in a match.
Box entries within 10s after recovery	The number of possessions of a team that entered the penalty area within 10 seconds of an open play ball recovery.
Box entries to shot %	The proportion of box entering possessions by a team that led to a shot.
Corners	The number of corners received by a team.
Defensive duels won %	A team's win percentage of defensive duels.
Defensive intensity	The amount of defensive actions (duels, interceptions, tackles and fouls) that a team has per minute out of possession.
Defensive line height (m)	The average height on the pitch of defensive actions by a team in open play.
Field tilt %	The share of possession that a team had in the final third compared to their opponents.
Final third entries within 10s after recovery	The number of possessions of a team that reached the final third within 10 seconds of an open play ball recovery.
Final third throw-ins	The number of throw-ins in the final third received by a team.
Final third to box %	The proportion of final third possessions by a team that entered the penalty area.
Goal difference	The difference between the number of goals scored and the number of goals conceded by a team.
Goals	The number of goals that a team scored.
High opportunity shots	The number of non-penalty shots by a team with expected goals higher than 0.15.
Long ball %	The proportion of passes longer than 32 meters in the defensive half by a team.
np Goals	The number of non-penalty goals by a team.
np Shots	The number of non-penalty shots by a team.
np xG	The number of goals that a team should be expected to score statistically in a match considering the quality of their chances, excluding penalties.
Pass tempo	The number of passes that a team made per minute of possession.
Penalties	The number of penalties received by a team.
Penalty area touches	The number of touches by a team inside the opponent's penalty area.
PPDA	The number of passes of the opponent team in their defensive 60% of the field compared to the number of defensive actions of a team in the same region.
Recoveries	The number of ball recoveries of a team in open play.

Glossary

Recoveries within 5s %	The percentage of ball recoveries made by a team within 5 seconds after losing the possession of the ball in open play.
Recovery line height (m)	The average height on the pitch that a team recovered the ball.
Red cards	The number of red cards received by a team.
Time to defensive action (s)	The average time that it took a team to make a defensive action after losing the possession of the ball in open play.
Time to recovery (s)	The average time that it took a team to recover the possession of the ball after losing it in open play.
Turnover line height (m)	The average height on the pitch that a team lost the possession of the ball in open play.
Turnovers	The number of times that a team lost the possession of the ball in open play.
Win probability %	The probability that a team would win a match based on their and their opponent's expected goals.
xG	The number of goals that a team should be expected to score statistically considering the quality of their chances.
xG within 10s after recovery	The number of goals that a team should be expected to score statistically considering the quality of their chances from attacks within 10 seconds of an open play ball recovery.
xG per shot	The average probability that the non-penalty shots of a team resulted in a goal.
xPoints	The number of points that a team should expect to receive statistically from a match based on their and their opponent's expected goals.
xT	The expected offensive contribution by a team considering the quality of their passes and ball carries.
xT within 10s after recovery	The expected offensive contribution by a team considering the quality of their passes and ball carries within 10 seconds of an open play ball recovery.
Yellow cards	The number of yellow cards received by a team.